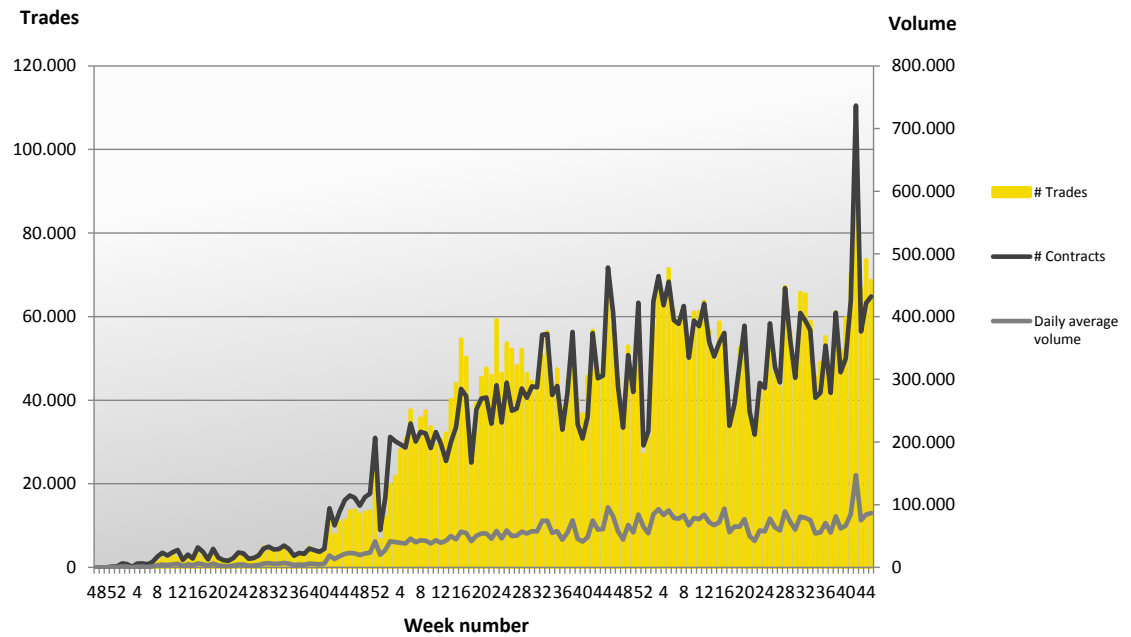
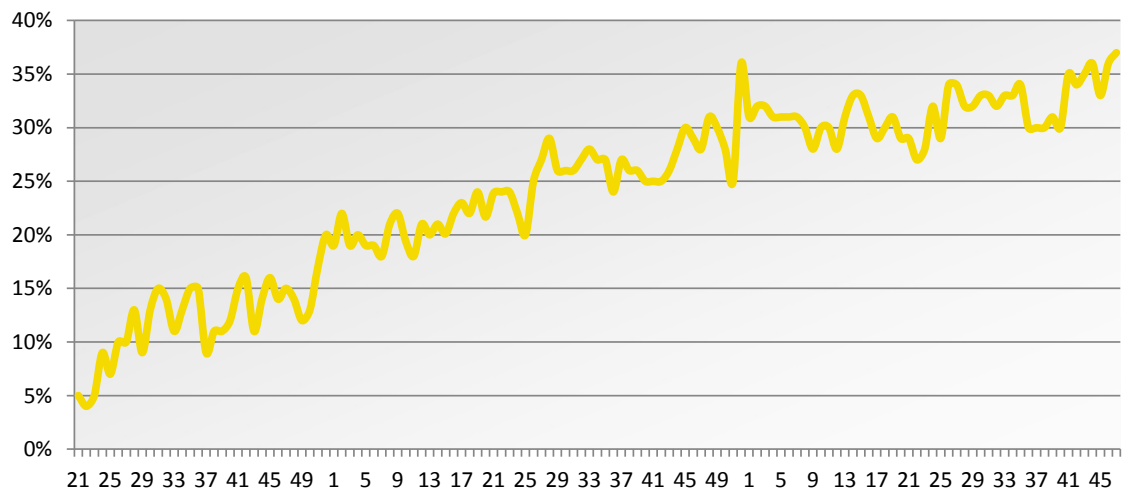


# Week 47 2014 – Derivatives

## Volume and transactions since launch



## TOM MTF market share vs NYSE Liffe (TOM MTF covered classes)



## Volume and market share per class

Index options	# TOM MTF	# Euronext	Total	% TOM MTF	% Euronext
XNL (Monthly TOM Options based on AEX index)	119.297	220.109	339.406	35%	65%
XNL01-31 (Daily TOM Options based on AEX index)	28.838	44.770	73.608	39%	61%
XNLW1-5 (Weekly TOM Options based on AEX index)	8.839	18.380	27.219	32%	68%
MXNL (Mini TOM Options based on AEX index)	3.154	495	3.649	86%	14%
<b>Total index options</b>	<b>160.128</b>	<b>283.754</b>	<b>443.882</b>	<b>36%</b>	<b>64%</b>

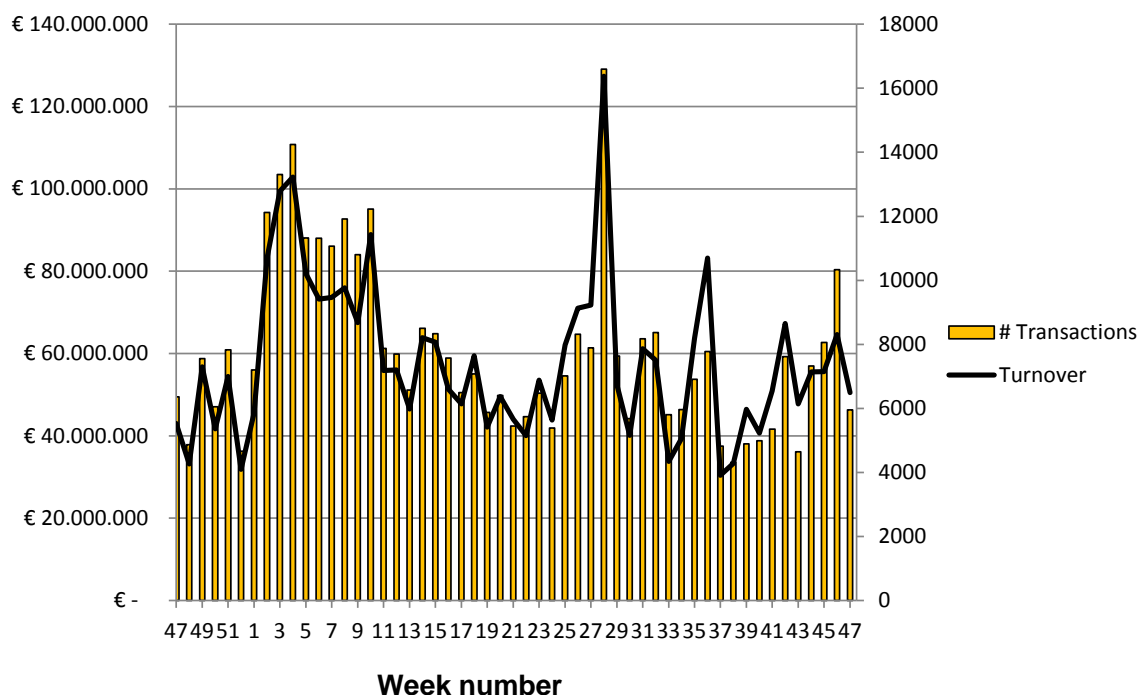
Equity options (monthly classes)	# TOM MTF	# Euronext	Total	% TOM MTF	% Euronext
Aalberts Industries (AAIT)	3.133	2.856	5.989	52%	48%
Ahold (AHT)	8.447	17.624	26.071	32%	68%
AEGON (AGT)	16.821	19.130	35.951	47%	53%
Akzo Nobel (AKZT)	6.958	9.271	16.229	43%	57%
Air France / KLM (AFAT)	2.183	13.204	15.387	14%	86%
Ageas (AGAT/AGXT)	845	914	1.759	48%	52%
AMG (AMGT)	1.347	1.765	3.112	43%	57%
Aperam (APT)	5.525	6.128	11.653	47%	53%
Arcadis (ARCT)	549	388	937	59%	41%
ArcelorMittal (MTT)	42.560	66.400	108.960	39%	61%
ASM International (ASMT / ASXT)	1.483	1.601	3.084	48%	52%
ASML Holding (ASLT/ALOT)	19.949	31.911	51.860	38%	62%
BAM Groep (BAMT)	3.601	7.337	10.938	33%	67%
BinckBank (BCKT)	1.400	1.289	2.689	52%	48%
Brunel International (BIT)	253	190	443	57%	43%
Boskalis Westminster (BOST)	3.076	3.363	6.439	48%	52%
Corio (CIOT)	66	2.745	2.811	2%	98%
CSM (CSMT/CSOT)	1.292	1.937	3.229	40%	60%
Delta Lloyd (DLT)	3.848	6.629	10.477	37%	63%
DSM (DSMT)	6.465	9.606	16.071	40%	60%
Fugro (FUOT / FURT)	16.841	28.438	45.279	37%	63%
Geralto (GMIT)	2.003	3.546	5.549	36%	64%
Heineken (HEIT)	2.099	3.719	5.818	36%	64%
Heijmans (HEYT)	1.093	983	2.076	53%	47%
ING Groep (INGT)	39.815	78.481	118.296	34%	66%
KPN (KPNT/ KPOT)	9.659	11.707	21.366	45%	55%
Nieuwe Steen investments (NSIT)	26	17	43	60%	40%
NN Group (NNT)	284	1.674	1.958	15%	85%
Nutreco Holding (NUOT)	1.505	2.533	4.038	37%	63%
Ordina (ORDT)	1.972	656	2.628	75%	25%
Philips (PHIT)	17.318	32.903	50.221	34%	66%
PostNL (PNLT)	4.698	7.787	12.485	38%	62%
Randstad (RNDT)	7.786	13.419	21.205	37%	63%
Reed Elsevier (RENT)	974	2.690	3.664	27%	73%
Royal Imtech (IMT/IMMT)	8.828	6.945	15.773	56%	44%
Royal Dutch Shell (RDT)	35.528	68.935	104.463	34%	66%
SBM Offshore (SBMT/SBOT)	14.407	32.858	47.265	30%	70%
Koninklijke Ten Cate (TCTT)	2.154	1.506	3.660	59%	41%
TKH Group (TKGT)	1.268	1.953	3.221	39%	61%
TNT Express (TNET)	1.788	2.580	4.368	41%	59%
TomTom (TTMT)	6.864	7.901	14.765	46%	54%
Unilever (UNAT)	9.636	16.650	26.286	37%	63%
USG People (USGT)	7.445	8.561	16.006	47%	53%
Unibail-Rodamco (UBLT)	1.076	1.442	2.518	43%	57%
Wessanen (WEST)	4.415	3.053	7.468	59%	41%
Vopak (VPKT)	2.120	1.924	4.044	52%	48%
Wereldhave (WHVT)	370	942	1.312	28%	72%
Wolters Kluwer (WKLK)	1.457	1.202	2.659	55%	45%

Equity options (weekly classes)	# TOM MTF	# Euronext	Total	% TOM MTF	% Euronext
Aegon (Weekly series)	661	280	941	70%	30%
ArcelorMittal (Weekly series)	1.650	1.051	2.701	61%	39%
ING (Weekly series)	1.516	148	1.664	91%	9%
Philips (Weekly series)	150	104	254	59%	41%
Royal Dutch Shell (Weekly series)	465	72	537	87%	13%
<b>Total equity options</b>	<b>337.672</b>	<b>550.948</b>	<b>888.620</b>	<b>38%</b>	<b>62%</b>

<b>Total options</b>	<b>497.800</b>	<b>834.702</b>	<b>1.332.502</b>	<b>37%</b>	<b>63%</b>
----------------------	----------------	----------------	------------------	------------	------------

# Week 47 2014 – Cash

## 1 year rolling turnover and volume



## Statistics Week 47 2014

Date	# Transactions	Turnover	Volume	Average value per transaction
17-11-2014	334	€ 2.632.911	156.061	€ 7.883
18-11-2014	1.317	€ 10.769.425	784.991	€ 8.177
19-11-2014	1.155	€ 8.759.512	708.748	€ 7.584
20-11-2014	1.456	€ 12.366.688	767.450	€ 8.494
21-11-2014	1.691	€ 15.982.139	1.050.645	€ 9.451
	<b>5.953</b>	<b>€ 50.510.675</b>	<b>3.467.895</b>	

**Contact**  
**TOM MTF**  
 Barbara Strozzilaan 310-322  
 1083 HN Amsterdam

+31 20 719 5030  
[www.tommtf.eu](http://www.tommtf.eu)  
[info@tomgroup.eu](mailto:info@tomgroup.eu)

# Week 47 statistics per share



WEEK 47

# Update

21 NOVEMBER 2014

ISIN	Euronext	TOM	Total	TOM MTF	market share	ISIN	Euronext	TOM	Total	TOM MTF	market share
NL000922249	240.605	34.329	274.934	12.5%	BE0003565737	KBC GROEP NV	5.224.078	1.000	5.225.078	0.0%	
IE00B0M62Y33	407.378	31.562	438.940	7.2%	FR0000120321	L'OREAL	3.561.691	531	3.562.222	0.0%	
NL0000354488	3.217.798	70.256	3.288.054	2.1%	FR0000125486	VINCI SA	9.781.766	1.410	9.783.176	0.0%	
NL0000352565	14.499.386	206.473	14.705.859	1.4%	FR0000121972	SCHNEIDER ELECTRIC SE	6.602.651	741	6.603.392	0.0%	
NL0000303600	10.145.530	142.308	10.287.838	1.4%	FR0000120404	ACCOR SA	3.700.428	400	3.700.828	0.0%	
NL0000360618	89.001.850	1.016.479	90.018.329	1.1%	BE0003793107	ANHEUSER-BUSCH INBEV NV	7.869.701	747	7.870.448	0.0%	
NL0000852564	16.264.404	164.992	16.429.396	1.0%	BE0003739530	UCB SA	1.071.941	98	1.071.941	0.0%	
NL0000303709	855.130	8.281	863.411	1.0%	LU0569974404	APERAM	3.577.684	247	3.577.931	0.0%	
NL0000379121	45.596.068	416.991	46.013.059	0.9%	FR0000120503	BOUYGUES SA	7.894.055	444	7.894.499	0.0%	
GR00B03MLX29	3.670.063	33.205	3.703.268	0.9%	FR0000121667	ESSILOR INTERNATIONAL	2.366.700	118	2.366.818	0.0%	
NL0000294518	26.615.290	235.569	26.850.859	0.9%	FR0000120577	PUBLICIS GROUPE	2.497.427	89	2.497.516	0.0%	
NL0010395208	1.083.911	7.579	1.091.490	0.7%	FR0000120073	AIR LIQUIDE SA	3.361.020	100	3.361.120	0.0%	
NL0009739416	14.076.189	82.366	14.158.555	0.6%	FR0000125338	CAP GEMINI	2.915.578	65	2.915.643	0.0%	
NL0000090882	14.784.739	72.153	14.856.892	0.5%	NL0000888691	AMG ADVANCED METALLURGICAL	585.583	-	585.583	0.0%	
NL0010886891	70.984.045	322.575	71.306.620	0.5%	NL0000341118	ASM INTERNATIONAL NV	840.406	-	840.406	0.0%	
NL0000095338	7.315.372	29.729	7.345.101	0.4%	NL0010776944	BRUNEL INTERNATIONAL	210.814	-	210.814	0.0%	
NL0000289213	15.290.931	52.498	15.343.429	0.3%	NL0000288967	CORIO NV	1.685.187	-	1.685.187	0.0%	
FR000045072	369.064	1.184	370.248	0.3%	NL0010583399	CORBION NV	604.116	-	604.116	0.0%	
FR000031122	30.927.016	98.284	31.025.300	0.3%	NL0000288876	EUROCOMMERCIAL PROPRIETE-CV	308.947	-	308.947	0.0%	
NL0000090955	15.439.764	47.379	15.487.143	0.3%	NL0009269709	HEIJMANS N.V.-CVA	451.883	-	451.883	0.0%	
nl0010672325	20.366.232	53.724	20.419.956	0.3%	NL0000375749	TEN CATE NV	315.615	-	315.615	0.0%	
NL0009294552	15.526.839	39.208	15.566.047	0.3%	FR0000705458	LYXOR UCITS ETF EURO STOXX 5	4.441.080	-	4.441.080	0.0%	
NL000009165	4.320.085	10.360	4.330.445	0.2%	NL0000387058	TOMTOM	6.614.913	-	6.614.913	0.0%	
NL0000400653	2.615.175	6.149	2.621.324	0.2%	FR0010592014	LYXOR UCITS ETF DAILY LEVERA	10.969.430	-	10.969.430	0.0%	
FR0010242511	1.955.667	4.242	1.959.909	0.2%	NL0000288918	VASTNED RETAIL NV	99.250	-	99.250	0.0%	
NL000009132	5.731.938	10.211	5.742.149	0.2%	NL0009432491	VOPAK	1.027.796	-	1.027.796	0.0%	
NL0006237562	3.227.457	5.669	3.233.126	0.2%	NL0000292324	NIEUWE STEEN INVESTMENTS NV	820.577	-	820.577	0.0%	
FR0000144495	657.583	993	658.576	0.2%	NL0000395317	KONINKLIJKE WESSANEN NV	772.803	-	772.803	0.0%	
FR0000130809	9.079.022	13.264	9.092.286	0.1%	NL0006294290	ZIGGO NV	1.140.877	-	1.140.877	0.0%	
FR0000124141	23.849.126	34.020	23.883.146	0.1%	BE0003822393	ELIA SYSTEM OPERATOR SA/NV	119.518	-	119.518	0.0%	
NL0000099827	10.597.793	13.655	10.611.448	0.1%	BE0003764785	ACKERMANS & VAN HAAREN	194.656	-	194.656	0.0%	
FR0010220475	3.001.592	3.636	3.005.228	0.1%	BE0974259880	D'IETTEREN SA/NV	79.208	-	79.208	0.0%	
LU0323134006	6.153.352	7.422	6.160.774	0.1%	BE0003678894	BEFIMMO	84.668	-	84.668	0.0%	
NL0000395903	63.529.285	71.720	63.601.005	0.1%	BE0974258874	BEKAERT NV	530.580	-	530.580	0.0%	
FR0000131906	3.185.662	3.198	3.188.860	0.1%	BE0003810273	BELGACOM SA	3.031.621	-	3.031.621	0.0%	
FR0000121014	1.894.910	1.898	1.896.808	0.1%	BE0003593044	COFINIMO	105.259	-	105.259	0.0%	
FR0000125007	4.741.389	4.696	4.746.085	0.1%	BE0974256852	COLORITY SA	606.454	-	606.454	0.0%	
FR0000131708	4.072.151	3.688	4.075.839	0.1%	BE0003797140	GROUPE BRUXELLES LAMBERT SA	436.449	-	436.449	0.0%	
FR0000133308	9.582.653	8.117	9.590.770	0.1%	FR00007052782	LYXOR UCITS ETF CAC 40	1.132.506	-	1.132.506	0.0%	
FR0000120172	5.368.742	3.823	5.372.565	0.1%	BE0003826436	TELENET GROUP HOLDING NV	403.583	-	403.583	0.0%	
FR0000120644	1.323.191	854	1.324.045	0.1%	BE0003884047	UMICORE	1.566.320	-	1.566.320	0.0%	
NL0000852580	39.877.076	21.026	39.898.102	0.1%	LU0252633754	LYXOR ETF DAX	496.645	-	496.645	0.0%	
FR0000131104	12.618.692	6.561	12.625.253	0.1%	NL0000235190	AIRBUS GROUP NV	13.463.727	-	13.463.727	0.0%	
FR0000120578	6.200.574	3.192	6.203.766	0.1%	FR0000120577	LAFARE SA	3.341.757	-	3.341.757	0.0%	
FR0000120271	1.685.876	840	1.686.716	0.0%	FR0010307819	LEGRAND SA	2.354.257	-	2.354.257	0.0%	
FR0000120848	18.300.940	6.828	18.307.768	0.0%	FR0000121261	MICHELIN (CGDE)	15.792.243	-	15.792.243	0.0%	
FR0000120628	25.219.881	8.290	25.228.171	0.0%	FR0000120685	PATHEON RICARD SA	2.201.068	-	2.201.068	0.0%	
FR0000127771	37.420.255	11.553	37.431.808	0.0%	FR0000121501	PEUGEOT SA	20.185.513	-	20.185.513	0.0%	
	24.068.637	5.826	24.074.463	0.0%	NL0000214485	KERING	693.269	-	693.269	0.0%	
				0.0%	NL0000226223	STMICROELECTRONICS NV	10.099.527	-	10.099.527	0.0%	