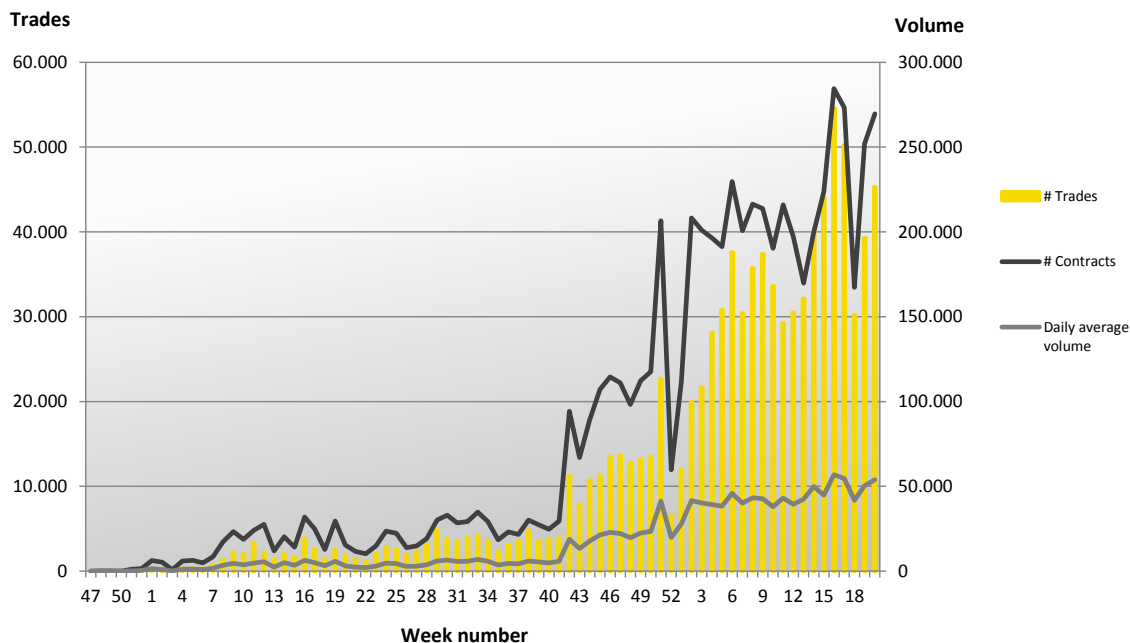
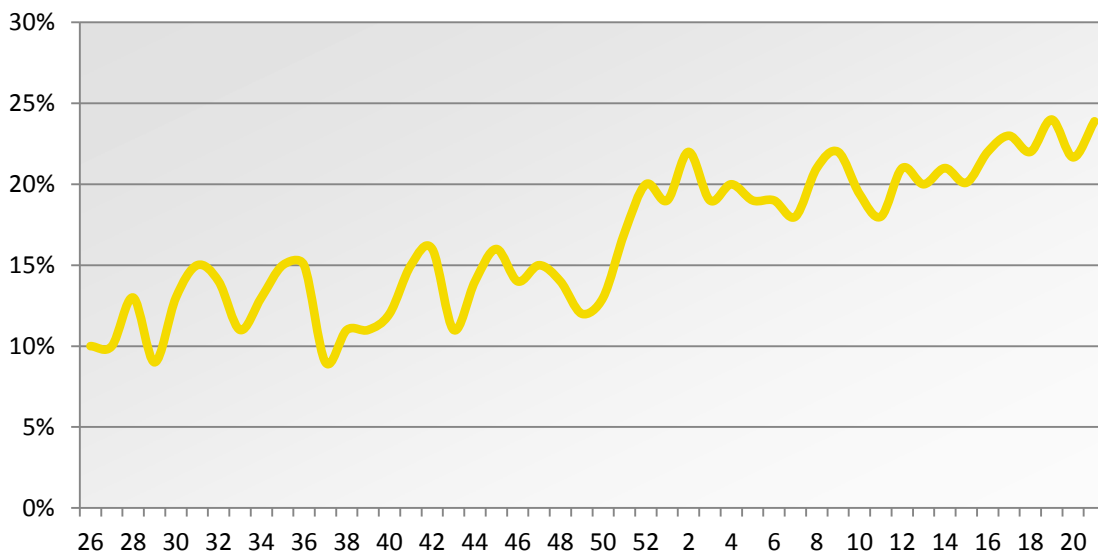


Week 21, 2013 – Derivatives

Volume and transactions since launch



TOM MTF market share vs NYSE Liffe (TOM MTF covered classes)



Volume and market share per class

Index options	# TOM MTF	# LIFFE	Total	% TOM MTF	% LIFFE
TOM Options based on AEX index	49.584	142.920	192.504	26%	74%
Daily TOM Options based on AEX index	35.583	38.368	73.951	48%	52%
Weekly TOM Options based on AEX index	25.605	49.118	74.723	34%	66%
Total index options	110.771	230.406	341.177	32%	68%

Equity options (monthly classes)	# TOM MTF	# LIFFE	Total	% TOM MTF	% LIFFE
Aalberts Industries (AAIT)	869	6.794	7.663	11%	89%
Ahold (AHT)	6.675	42.783	49.458	13%	87%
AEGON (AGT)	7.822	26.476	34.298	23%	77%
Akzo Nobel (AKZT)	1.537	10.106	11.643	13%	87%
Air France / KLM (AFAT)	1.821	3.285	5.106	36%	64%
Ageas (AGAT)*	86	919	1.005	9%	91%
AMG (AMGT)	1.162	1.778	2.940	40%	60%
Aperam (APT)	1.491	4.303	5.794	26%	74%
Arcadis (ARCT)*	-	494	494	0%	100%
ArcelorMittal (MTT)	7.736	37.759	45.495	17%	83%
ASM International (ASMT)	519	2.996	3.515	15%	85%
ASML Holding (ASLT/ALOT)	4.551	12.420	16.971	27%	73%
BAM Groep (BAMT)	2.150	5.981	8.131	26%	74%
BinckBank (BCKT)	1.272	3.179	4.451	29%	71%
Brunel International (BIT)*	271	1.761	2.032	13%	87%
Boskalis Westminster (BOST)	1.127	4.251	5.378	21%	79%
Corio (CIOT)	603	3.811	4.414	14%	86%
CSM (CSMT)	1.040	3.539	4.579	23%	77%
D.E. Master Blenders 1753 N.V. (DET)	53	639	692	8%	92%
Delta Lloyd (DLT)	4.456	14.926	19.382	23%	77%
DSM (DSMT)	3.419	6.451	9.870	35%	65%
Fugro (FURT)	3.287	9.234	12.521	26%	74%
Heineken (HEIT)	1.175	7.009	8.184	14%	86%
Heijmans*	110	541	651	17%	83%
ING Groep (INGT)	30.717	95.985	126.702	24%	76%
KPN (KPNT/ KPOT)	20.203	83.563	103.766	19%	81%
Nieuwe Steen investments*	20	641	661	3%	97%
Nutreco Holding*	318	3.456	3.774	8%	92%
Ordina*	112	713	825	14%	86%
Philips (PHIT)	5.308	37.387	42.695	12%	88%
PostNL (PNLT)	2.261	6.452	8.713	26%	74%
Randstad (RNDT)	961	6.621	7.582	13%	87%
Reed Elsevier (RENT)	694	2.084	2.778	25%	75%
Royal Imtech (IMT)	5.453	19.209	24.662	22%	78%
Royal Dutch Shell (RDT)	10.947	69.691	80.638	14%	86%
SBM Offshore (SBMT/SBOT)	11.343	39.030	50.373	23%	77%
Koninklijke Ten Cate*	148	865	1.013	15%	85%
TNT Express*	214	2.276	2.490	9%	91%
TomTom (TTMT)	6.880	23.885	30.765	22%	78%
Unilever (UNAT)	2.587	11.924	14.511	18%	82%
UNIT4*	-	278	278	0%	100%
USG People (USGT)	1.722	3.539	5.261	33%	67%
Unibail-Rodamco (UBLT)	586	2.365	2.951	20%	80%
Wessanen (WEST)	278	1.438	1.716	16%	84%
Vopak (VPKT)	606	3.175	3.781	16%	84%
Wereldhave*	172	1.121	1.293	13%	87%
Wolters Kluwer (WKLT)	281	1.722	2.003	14%	86%
ZIGGO (ZGOT)	166	1.698	1.864	9%	91%

Equity options (weekly classes)	# TOM MTF	# LIFFE	Total	% TOM MTF	% LIFFE
Aegon (Weekly series)	24	102	126	19%	81%
ArcelorMittal (Weekly series)	2.237	872	3.109	72%	28%
ING (Weekly series)	1.558	606	2.164	72%	28%
KPN (Weekly series)	651	80	731	89%	11%
Philips (Weekly series)	237	214	451	53%	47%
Royal Dutch Shell (Weekly series)	241	233	474	51%	49%
Total equity options	160.157	632.660	792.817	20%	80%

Total options	270.928	863.066	1.133.994	24%	76%
----------------------	----------------	----------------	------------------	------------	------------

Week 21, 2013 – Cash

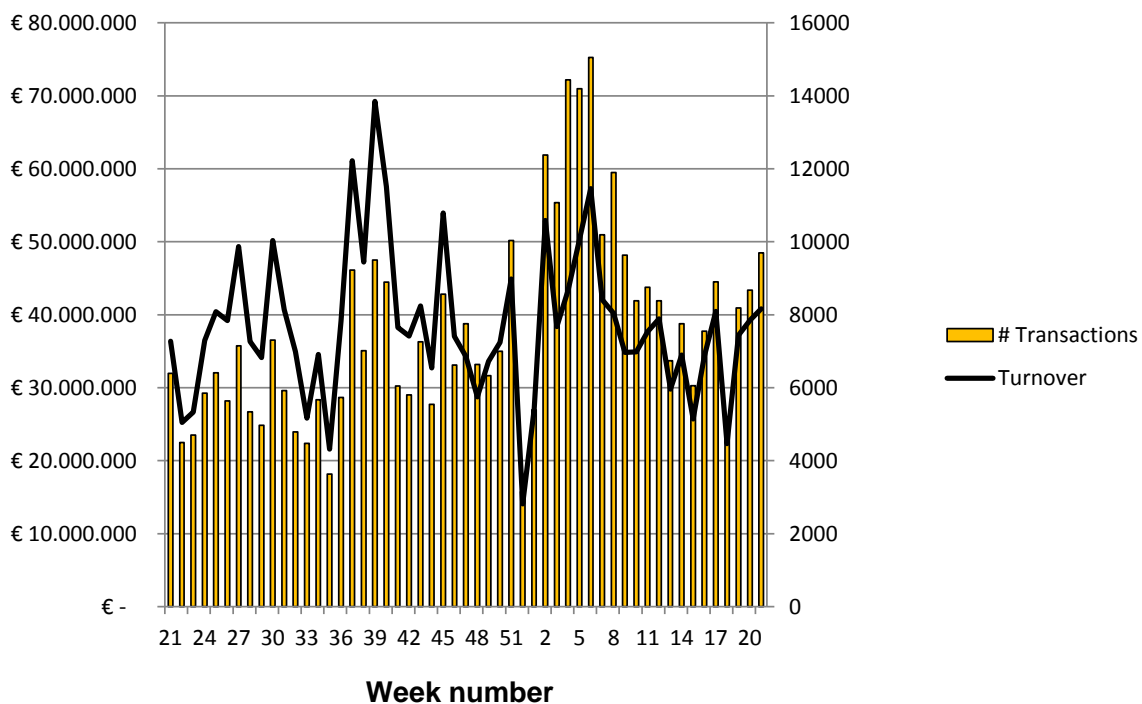


Update

WEEK 21

24 MAY 2013

1 year rolling turnover and volume



Statistics Week 21, 2013

Date	# Transactions	Turnover	Volume	Average value per transaction
20-5-2013	32	€ 115.171	10.237	€ 3.599
21-5-2013	2.253	€ 10.372.827	1.414.423	€ 4.604
22-5-2013	1.965	€ 8.201.596	1.077.343	€ 4.174
23-5-2013	3.663	€ 14.665.579	2.606.964	€ 4.004
24-5-2013	1.783	€ 7.461.921	991.175	€ 4.185
	9.696	€ 40.817.094	6.100.142	

Contact
TOM MTF
 Barbara Strozzilaan 310-322
 1083 HN Amsterdam

+31 20 719 5030
www.tommtf.eu
info@tomgroup.eu

Week 21 statistics per share

WEEK 21

Update

24 MAY 2013

	Euronext	TOM	Total	TOM MTF market share		Euronext	TOM	Total	TOM MTF market share
AALBERTS INDUSTRIES NV	783.081	10.072	793.153	1,3%	USG PEOPLE NV	1.522.043	9.201	1.531.244	0,6%
AIR FRANCE-KLM	16.912.709	900	16.913.609	0,0%	VASTNED RETAIL NV	210.036	287	210.323	0,1%
AEGON NV	46.008.837	504.545	46.513.382	1,1%	VOPAK	1.768.645	329	1.768.974	0,0%
KONINKLIJKE AHOLD NV	17.875.105	117.577	17.992.682	0,7%	WERELDHAVE NV	626.622	931	627.553	0,1%
AKZO NOBEL	3.915.935	4.071	3.920.006	0,1%	WOLTERS KLUWER	4.407.131	-	4.407.131	0,0%
AMG ADVANCED METALLURGICAL	682.399	4.610	687.009	0,7%	NIEUWE STEEN INVESTMENTS NV	1.210.288	5.722	1.216.010	0,5%
APERAM	3.972.406	2.200	3.974.606	0,1%	KONINKLIJKE WESSANEN NV	761.335	5.025	766.360	0,7%
ARCADIS NV	406.735	1.873	408.608	0,5%	ZIGGO NV	1.648.792	-	1.648.792	0,0%
ASM INTERNATIONAL NV	1.083.737	7.652	1.091.389	0,7%	ANHEUSER-BUSCH INBEV NV	7.212.841	768	7.213.609	0,0%
ASML HOLDING NV	7.172.006	12.338	7.184.344	0,2%	BEKAERT NV	576.646	786	577.432	0,1%
KONINKLIJKE BAM GROEP NV	5.865.981	110.461	5.976.442	1,8%	COLRUYT SA	613.504	465	613.969	0,1%
BRUNEL INTERNATIONAL	385.952	449	386.401	0,1%	GROUPE BRUXELLES LAMBERT SA	701.728	113	701.841	0,0%
BOSKALIS WESTMINSTER	1.587.522	300	1.587.822	0,0%	KBC GROEP NV	5.965.959	4.528	5.970.487	0,1%
CORIO NV	2.114.928	768	2.115.696	0,0%	TELENET GROUP HOLDING NV	628.174	53	628.227	0,0%
CSM	1.055.975	7.099	1.063.074	0,7%	UMICORE	3.594.129	100	3.594.229	0,0%
DELTA LLOYD NV	3.817.539	9.784	3.827.323	0,3%	AXA SA	34.612.818	4.768	34.617.586	0,0%
KONINKLIJKE DSM NV	3.411.383	17.794	3.429.177	0,5%	AIR LIQUIDE SA	3.858.169	512	3.858.681	0,0%
DE MASTER BLENDERS1753 NV	5.152.215	-	5.152.215	0,0%	BNP PARIBAS	22.178.287	8.807	22.187.094	0,0%
EUROCOMMERCIAL PROPRIETIE-CV	410.869	726	411.595	0,2%	CARREFOUR SA	15.437.766	3.909	15.441.675	0,0%
FUGRO NV-CVA	1.388.461	2.252	1.390.713	0,2%	CREDIT AGRICOLE SA	37.860.583	22.241	37.882.824	0,1%
PHARMING GROUP NV	31.885.843	-	31.885.843	0,0%	DANONE	6.040.656	740	6.041.396	0,0%
HEINEKEN NV	4.513.619	100	4.513.719	0,0%	ESSILOR INTERNATIONAL	2.381.107	286	2.381.393	0,0%
PHARMING GROUP NV	31.885.843	-	31.885.843	0,0%	EADS NV	9.425.533	1.194	9.426.727	0,0%
HEIJMANS N.V.-CVA	366.774	2.460	369.234	0,7%	FRANCE TELECOM SA	33.891.175	10.204	33.901.379	0,0%
ROYAL IMTECH NV	8.344.372	35.501	8.379.873	0,4%	GDF SUEZ	17.519.680	7.320	17.527.000	0,0%
ING GROEP NV-CVA	138.461.031	1.759.555	140.220.586	1,3%	L'OREAL	2.766.018	1.049	2.767.067	0,0%
KONINKLIJKE KPN NV	166.290.396	2.511.870	168.802.266	1,5%	LVMH MOET HENNESSY LOUIS VUIT	3.420.226	2.751	3.422.977	0,1%
TEN CATE NV	295.287	1.641	296.928	0,8%	LAFARGE SA	2.781.024	94	2.781.058	0,0%
ARCELORMITTAL	40.656.326	215.746	40.872.072	0,5%	MICHELIN (CGDE)	4.624.407	1.356	4.625.763	0,0%
KONINKLIJKE PHILIPS NV	18.194.408	32.998	18.227.406	0,2%	PPR	1.174.795	411	1.175.206	0,0%
RANDSTAD HOLDING NV	2.913.177	1.773	2.914.950	0,1%	RENAULT SA	7.093.335	1.876	7.095.211	0,0%
ROYAL DUTCH SHELL PLC-A SHS	22.193.310	235.910	22.429.220	1,1%	STMICROELECTRONICS NV	16.176.321	6.622	16.182.943	0,0%
REED ELSEVIER NV	11.729.223	12.503	11.741.726	0,1%	COMPAGNIE DE SAINT-GOBAIN	10.807.943	1.364	10.809.307	0,0%
SBM OFFSHORE NV	13.328.740	82.915	13.411.655	0,6%	SANOFI	12.098.961	4.506	12.103.467	0,0%
POSTNL NV	24.351.138	157.300	24.508.438	0,6%	SCHNEIDER ELECTRIC SA	8.750.933	673	8.751.606	0,0%
TNT EXPRESS NV	8.461.811	-	8.461.811	0,0%	SOIETE GENERALE	26.831.893	13.896	26.845.789	0,1%
TOMTOM	10.882.100	31.296	10.913.396	0,3%	TOTAL SA	22.273.170	7.540	22.280.710	0,0%
UNIBAIL-RODAMCO SE	1.830.622	-	1.830.622	0,0%	VEOLIA ENVIRONNEMENT	16.450.219	2.790	16.453.009	0,0%
UNILEVER NV-CVA	18.355.045	53.038	18.408.083	0,3%	VINCI SA	8.362.293	1.606	8.363.899	0,0%
UNIT 4 NV	146.025	791	146.816	0,5%	VIVENDI	29.387.848	8.739	29.396.587	0,0%