

# Tokyo Grain Exchange Inc.

## Monthly Report for August

3-Sep-12

### MONTHLY TRADING VOLUME

(Unit: contracts)

FUTURES	August-12	August-11	CHANGE(%)	July-12	CHANGE(%)
RICE	5,970	20,692	-71.1%	5,969	0.0%
CORN	140,807	77,542	81.6%	160,143	-12.1%
SOYBEANS	75,380	74,030	1.8%	159,827	-52.8%
AZUKI (RED BEANS)	3,244	9,343	-65.3%	5,039	-35.6%
ARABICA COFFEE	122	1,197	-89.8%	52	134.6%
RAW SUGAR	838	5,728	-85.4%	1,811	-53.7%
<b>TOTAL</b>	<b>226,361</b>	<b>188,652</b>	<b>20.0%</b>	<b>332,841</b>	<b>-32.0%</b>

### OPEN INTEREST (MONTH-END)

(Unit: contracts)

FUTURES	31-Aug-12	31-Aug-11	CHANGE(%)	31-Jul-12	CHANGE(%)
RICE	1,400	5,025	-72.1%	1,843	-24.0%
CORN	28,723	30,991	-7.3%	26,438	8.6%
SOYBEANS	33,246	31,975	4.0%	35,337	-5.9%
AZUKI (RED BEANS)	2,346	3,785	-38.0%	3,229	-27.3%
ARABICA COFFEE	264	923	-71.4%	298	-11.4%
RAW SUGAR	2,462	7,503	-67.2%	2,442	0.8%
<b>TOTAL</b>	<b>68,441</b>	<b>81,023</b>	<b>-15.5%</b>	<b>69,587</b>	<b>-1.6%</b>

### AVERAGE DAILY VOLUME

(Unit: contracts)

FUTURES	AVERAGE
RICE	260
CORN	6,122
SOYBEANS	3,277
AZUKI (RED BEANS)	141
ARABICA COFFEE	5
RAW SUGAR	36
<b>TOTAL</b>	<b>9,841</b>

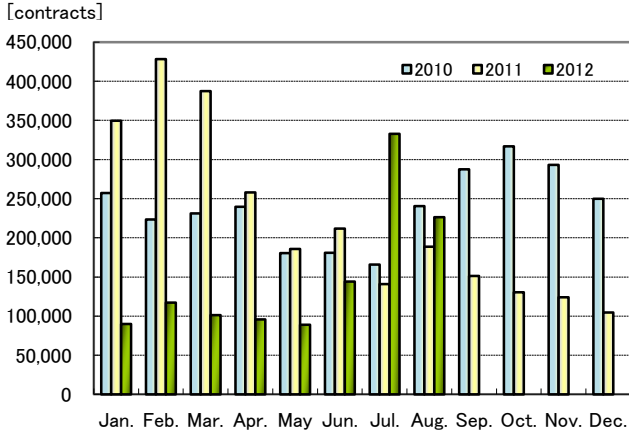
(Unit: contracts)

FUTURES	DELIVERIES
RICE	7
CORN	181
SOYBEANS	729
AZUKI (RED BEANS)	353
ARABICA COFFEE	-
RAW SUGAR	-
<b>TOTAL</b>	<b>1,270</b>

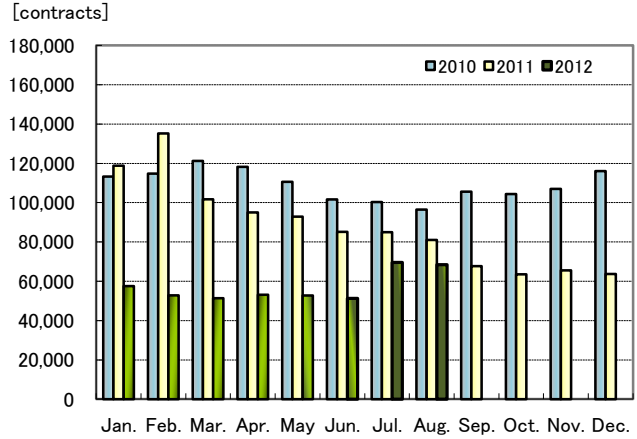
<b>LARGEST DAILY VOLUME</b>	14,678	2012/8/13
<b>LOWEST DAILY VOLUME</b>	5,834	2012/8/7
<b>Trading Days</b>	23	

# Tokyo Grain Exchange Inc.

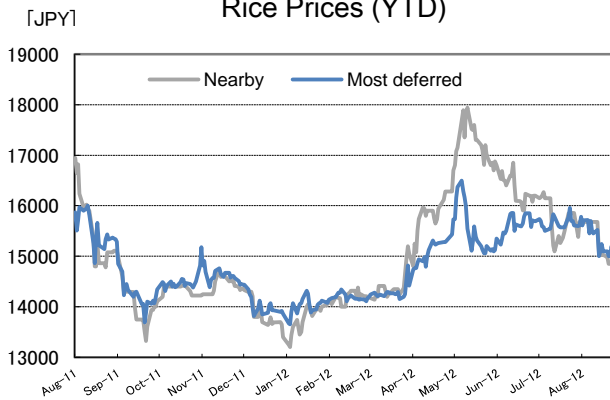
## Monthly Volume



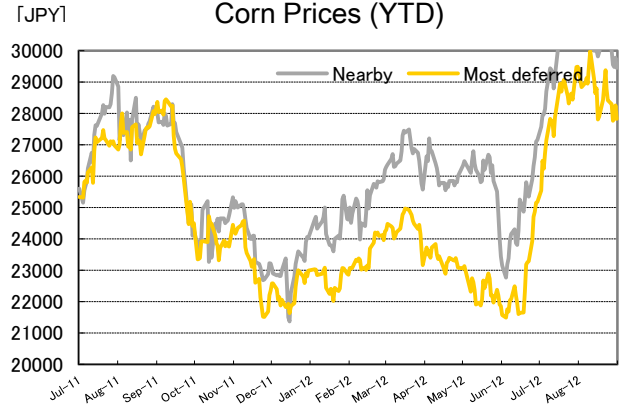
## End of Month Open Interest



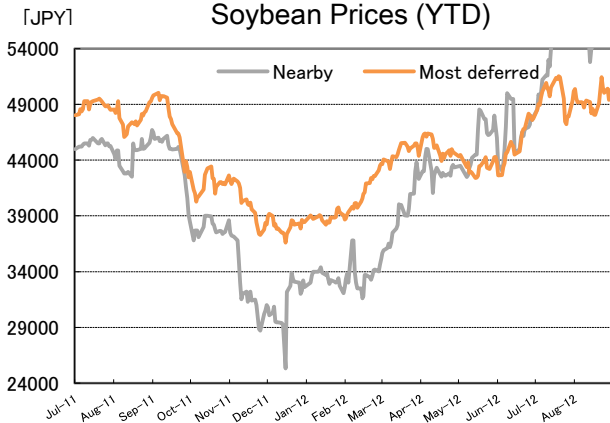
## Rice Prices (YTD)



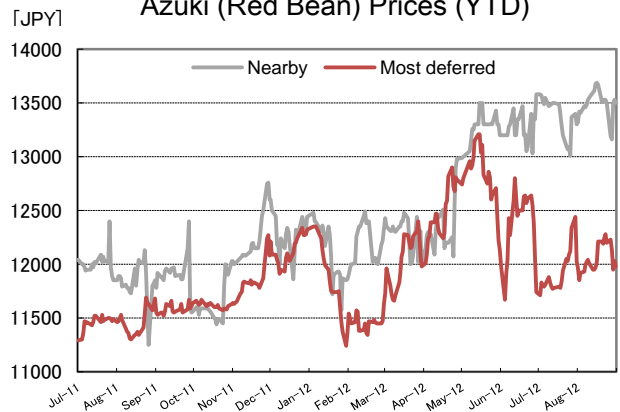
## Corn Prices (YTD)



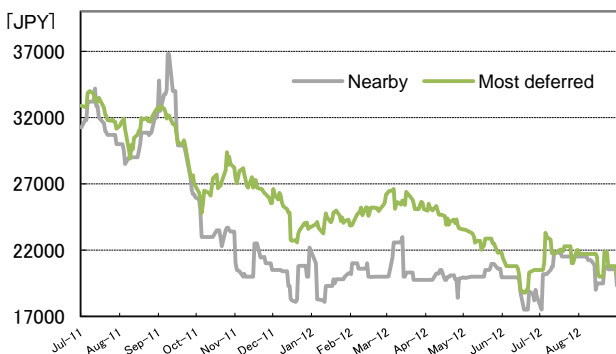
## Soybean Prices (YTD)



## Azuki (Red Bean) Prices (YTD)



## Arabica Coffee Prices (YTD)



## Raw Sugar Prices (YTD)

