



NZX Limited - Monthly Shareholder Metrics

June 2013

These Shareholder Metrics represent the key features of NZX's operations in the core business of Markets, Infrastructure and Information. The Metrics focus on what drives the revenue performance of NZX, so as to give an accurate, consistent and transparent comparison across time periods for each business line.

MARKETS

NZX LISTED SECURITIES	JUNE 2013	CHANGE YOY
Total Equity Securities	165	-2.9%
Total Listed Debt Securities	91	-11.7%
Total Other Securities	6	-40.0%
Total Listed Securities	262	-7.4%

CAPITAL RAISED	JUNE 2013	YEAR TO DATE
Total Capital Raised By All Issuers	\$305 million	\$885 million
- Total Equity Raised - Primary	\$236 million	\$642 million
- Total Equity Raised - Dual & Secondary	\$1 million	\$150 million
- Total Debt Raised	\$68 million	\$93 million
Number of Capital Raising Events	32	118
- Capital Raised < \$0.5m	12	51
- Capital Raised > \$0.5m < \$10m	14	47
- Capital Raised > \$10m < \$100m	6	20
- Capital Raised > \$100m	0	0
New Capital Listed	\$0 billion	\$3.8 billion

MARKET CAPITALISATION	JUNE 2013	CHANGE YOY	% GDP
All Equity	\$72.9 billion	28.0%	34.4%
All Debt	\$13.8 billion	-10.5%	6.5%

LINK MARKET SERVICES	JUNE 2013	CHANGE YOY
Total Number of Issuers	153	4.8%

CASH MARKET TRADING	JUNE 2013	CHANGE YOY
Total Trades	91,807	21.1%
Average Daily Trades	4,832	27.5%
Total Trades < \$50k	84,693	20.9%
Total Value Traded	\$2.7 billion	19.5%
Daily Average Value Traded	\$141 million	25.8%

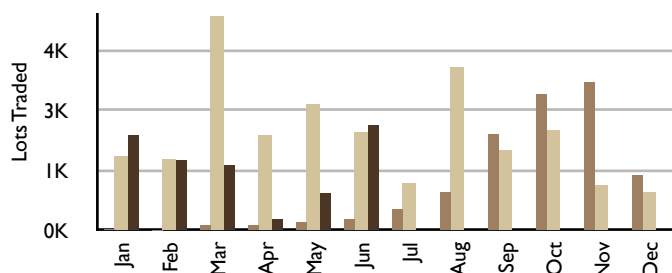
Total Equity Transactions	JUNE 2013	CHANGE YOY
Total Trades	89,169	23.1%
Value Traded	\$2.6 billion	21.4%
Total Debt Transactions		
Total Trades	2,638	-22.2%
Value Traded	\$75 million	-22.4%
Cumulative Numbers - YTD		
Number of Trades	528,576	17.5%
Total Value Traded	\$20.8 billion	56.0%

SMARTSHARES	JUNE 2013	CHANGE YOY
Funds Under Management	\$330 million	14.0%
Units on Issue	166 million	-4.4%
Number of Funds	5	0.0%

INDICES PERFORMANCE	JUNE 2013	CHANGE YOY
NZX 50	4,440	30.6%
NZX 50 Portfolio	2,688	32.3%
ANZ A-Grade Bond Index	4,082	4.5%
ANZ All Swaps Index	163	1.1%

DERIVATIVES

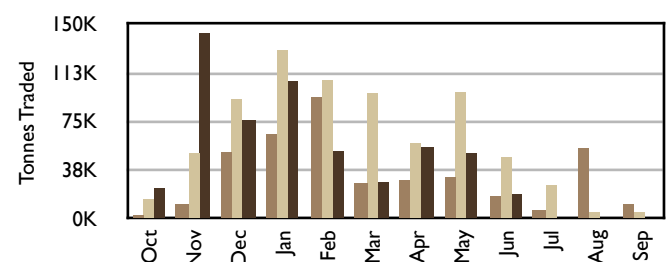
Lots Traded 2011 / 2012 / 2013



	June 2013	CHANGE YOY
Lots Traded	2,199	7.3%
Open Interest	3,993	-46.0%

GRAIN TRADING

Tonnes Traded Monthly (10/11 v 11/12 v 12/13 season)



	SEASON-TO-DATE	CHANGE YOY
Tonnes Traded	555,334	-20.0%

INFORMATION

WHOLESALE DATA	JUNE 2013	CHANGE YOY
Primary Data Distributors	32	3.2%
Real Time Data Terminals	6,870	-2.2%
Other Data Distributors	56	1.8%

DIRECT DATA PRODUCTS	JUNE 2013	CHANGE YOY
Dairy Information Subscriptions	9,494	0.8%
Grain Information Subscriptions	1,853	-13.0%
General Agri Subscriptions	9,779	2.4%
Proprietary Security Subscription Products	531	-3.5%
- Products >= \$3000 p.a.	187	-5.6%
- Products < \$3000 p.a.	344	-2.3%
Total Subscriptions	21,657	0.0%
Total Paid Advertising Page Equivalents	161	-30.6%

INFRASTRUCTURE

CLEARING HOUSE/DEPOSITORY	JUNE 2013	CHANGE YOY
Gross value of cleared trades over month	2.7 billion	19.5%
Collateral held at month end	\$28.4 million	108.8%
Depository transactions	1,679	-2.7%
Assets under custody in depository	\$188.0 million	18.5%
Value of stock lent over month	\$290.3 million	113.8%

MARKET OPERATIONS

JUNE 2013

Operating / Technology Contracts	14
- Contracts >= \$500k p.a.	6
- Contracts < \$500k p.a.	8

NOTES

- All figures are measured at the end of the last trading day of the month. Change refers to the change since the same period last year unless otherwise stated i.e. Change YoY is change versus the same period last year.
- New Capital Listed refers to the initial market capitalisation of Initial Public Offerings.
- All Equity Market Capitalisation includes all securities quoted on the NZX Main Board and NZX Alternative Market.
- Market Capitalisation for the NZX Debt market is the total nominal (face) value of all quoted securities excluding New Zealand Government Stock.
- The Grain Trading season in Australia runs from October to September.
- NZX Limited wishes to remind readers that the above operational statistics are based on the Group's internal records, which are unaudited. Differences may arise between data and that disclosed in subsequent audited financial statements.

To enquire about NZX products or services, please contact: NZX Data on +64-4-4714390 or email: info@nzx.com.

To enquire about information listed on this sheet, please email info@nzx.com.