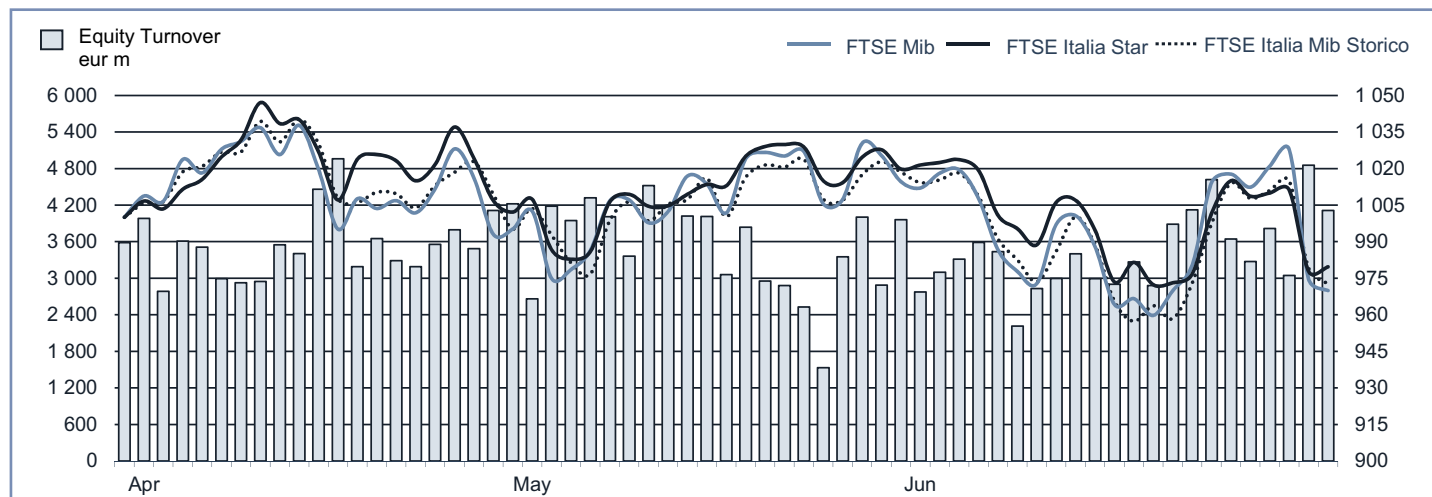




MONTHLY UPDATE

June 2015

EQUITY DAILY TURNOVER AND MAIN INDICES (BASE = 1000 31.03.2015)



STOCK INDICES

	29 MAY 2015	30 JUNE 2015	Var. % MoM	Var. % 2014 end	Volatility June 2015
FTSE Italia Mib Storico	19 951	19 051	-4.5%	19.2%	22.5%
FTSE Mib	23 496	22 461	-4.4%	18.1%	28.0%
FTSE Italia Star	25 271	24 277	-3.9%	30.1%	20.4%

FTSE MIB VOLATILITY



TRADING - DAILY AVERAGE

	JAN-JUNE 2014		JAN-JUNE 2015		JUNE 2015	
	Trades Number	Turnover eur m	Trades Number	Turnover eur m	Trades Number	Turnover eur m
Shares	279 933	2 983.9	297 163	3 480.8	274 838	3 412.2
Securitized Derivatives	9 002	103.8	12 840	134.4	13 621	134.6
ETF Plus	12 004	296.9	21 175	440.0	18 626	411.1
Fixed Income	21 983	1 503.9	22 647	1 435.2	18 935	1 031.1

(*) Indicators are related to turnover figures.

LISTING

	30 DEC 2014	29 MAY 2015	30 JUNE 2015
MTA Domestic	239	236	237
of which STAR	65	66	67
MTA Foreign	4	4	4
of which STAR	1	1	1
MIV (Investment Companies and SPAC)	6	6	6
MTA International	36	36	36
AIM Italia - MAC	57	66	67
Listed Companies Total	342	348	350
Warrant	29	29	29
MIV Closed End Funds	25	25	25
ETF	673	684	684
ETCIETN	254	254	255
OICR Open	-	37	37
ETF Plus Total	927	975	976
Securitized Derivatives	4 172	6 886	5 959
Convertibles Bonds	14	14	14
Mot - Government Bonds	113	119	117
Mot - Bonds	456	328	321
Mot - Eurobonds and ABSs	538	582	607
MOT Total	1 107	1 029	1 045
Extramot	556	652	662
Fixed Income Total	1 663	1 681	1 707

MOST TRADED SHARES IN THE MONTH

Shares	Mkt	Turnover	% TOT
Unicredit	MTA	9 283.5	12.4%
Intesa Sanpaolo	MTA	9 157.1	12.2%
Enel	MTA	6 807.2	9.1%
Eni	MTA	6 044.9	8.1%
Fiat Chrysler Automobiles	MTA	3 690.9	4.9%

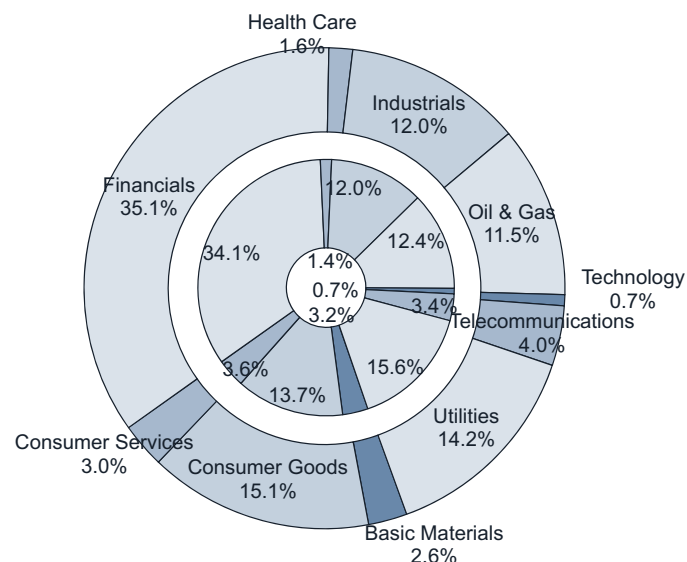
BEST PERFORMANCES IN THE MONTH

Shares	Mkt	Var. %.	Var %
Modelleria Brambilla	AIMMA	66.0%	108.2%
Digital Bros	MTA	26.9%	180.3%
Ambromobiliare	AIMMA	17.1%	0.1%
Ovs	MTA	12.3%	..
Visibilia Editore	AIMMA	10.4%	-61.1%

Performances are computed with no-rounded official prices.
Performance is not included for shares not listed at 2014 end or unlimited suspended at June 2015 end

CAPITALISATION

Domestic Companies Capitalisation (eur m)	30 DEC 2014	29 MAY 2015	30 JUNE 2015
MTA Capitalisation	480 151	596 451	577 500
of which STAR	22 479	30 206	29 221
MIV (Investment Companies e SPAC)	236	304	452
AIM Italia - MAC	2 052	2 602	2 601
Total	482 438	599 357	580 553
Capitalisation (% GDP)			
MTA	29.7%	36.7%	35.5%
of which STAR	1.4%	1.9%	1.8%
Total	29.8%	36.9%	35.7%
Capitalisation (% Tot.)			
FTSE MIB Shares	80.6%	79.9%	79.8%

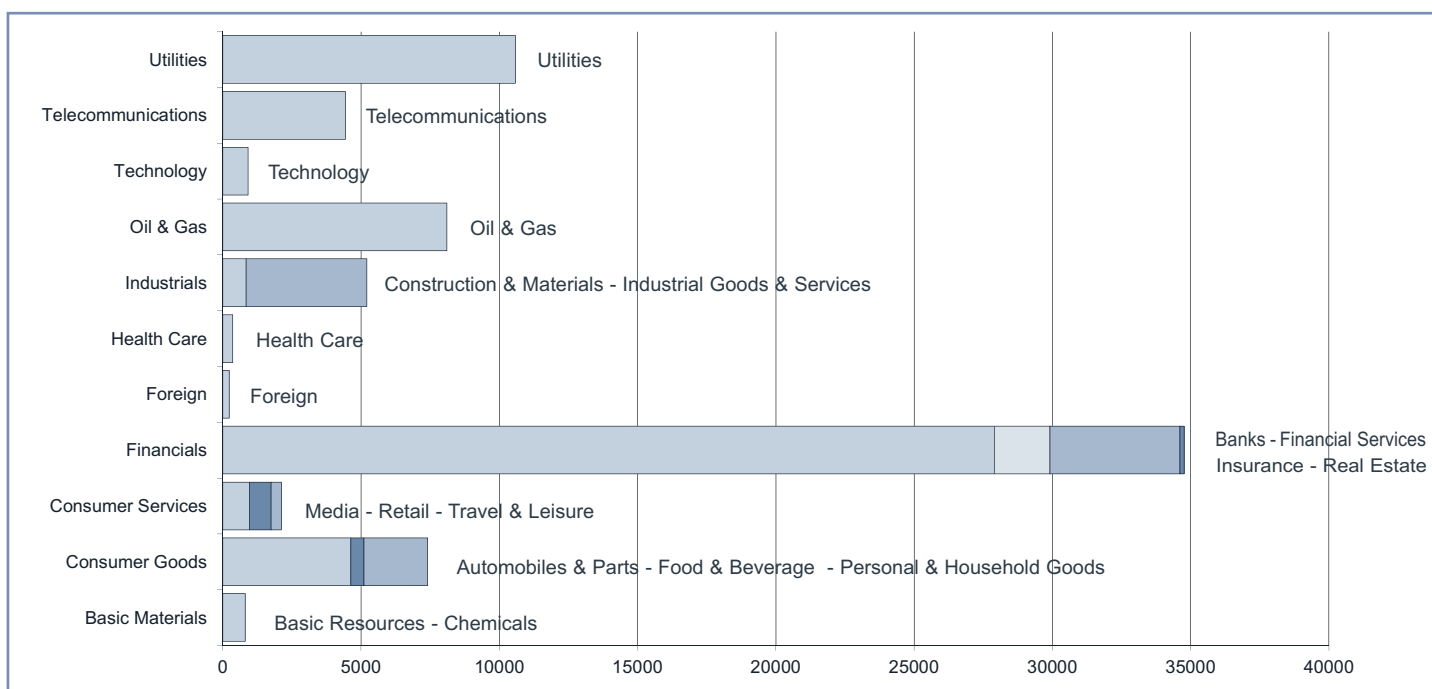


Note: internal chart: capitalisation on 30.12.2014;
external chart: capitalisation on 30.06.2015.

TRADING

SHARES	JAN-JUNE 2014		JAN-JUNE 2015		JUNE 2015		OTHER INSTRUMENTS	JAN-JUNE 2014		JAN-JUNE 2015		JUNE 2015	
	Trades Number	Turnover eur m	Trades Number	Turnover eur m	Trades Number	Turnover eur m		Trades Number	Turnover eur m	Trades Number	Turnover eur m	Trades Number	Turnover eur m
MTA Domestic	33 416 277	361 277.6	36 077 632	427 528.2	5 871 047	73 955.6	SeDex	1 125 250	12 971.9	1 605 023	16 805.6	299 654	2 962.0
of which STAR	2 865 885	11 270.2	3 082 230	13 787.9	472 881	2 060.9	Warrant	52 073	53.0	45 017	57.5	5 567	7.2
MTA Foreign	1 345 076	10 592.2	779 274	6 201.3	126 926	872.5	MIV Closed End Funds	45 951	195.9	33 375	107.9	3 685	12.2
of which STAR	24 788	174.2	58 471	484.0	5 705	46.6	ETF	1 149 469	33 542.6	1 561 920	43 225.9	230 356	6 884.1
MIV Invest. Companies	46 530	71.3	24 751	50.0	2 576	7.8	ETC	351 091	3 573.5	1 084 743	11 744.7	179 365	2 135.0
MTA International	116 682	840.5	115 426	840.0	16 445	128.0	OICR Open	-	-	181	30.9	49	24.4
AIM Italia - MAC	67 031	207.0	148 332	476.6	29 433	105.3	ETF Plus	1 500 560	37 116.2	2 646 844	55 001.4	409 770	9 043.4
Total	34 991 596	372 988.6	37 145 415	435 096.1	6 046 427	75 069.2	Convertible Bonds	8 840	128.3	4 245	45.5	448	3.8
FTSE MIB Shares							Subscription rights	944 435	2 454.7	262 425	999.0	167 725	590.9
% Shares Total	72.2%	89.7%	71.8%	90.3%	71.5%	90.5%	Mot - Government Bonds	2 067 261	173 599.9	2 078 699	164 639.9	322 389	20 924.0
							Mot - Bonds	364 773	6 309.9	278 678	4 770.5	38 267	620.3
							Mot - Eurobonds and ABSs	264 707	4 360.2	443 560	7 762.6	51 560	854.8
							ExtraMOT	51 182	3 716.9	29 914	2 232.9	4 343	286.2
							Fixed Income Total	2 747 923	187 986.9	2 830 851	179 405.9	416 559	22 685.2

INDUSTRY/SUPERSECTOR TURNOVER (eur m)



NEW LISTINGS

RECENT EVENTS

ISSUER	MKT	SHARES	TRADING FIRST DAY	EVENT	1st DAY CAPITALISATION (eur m)	SPONSOR (NOMAD for AIM Italia)
Elettra Investimenti	AIMMA	0	21.04.2015	IPO	22.88	UBI Banca
Cover 50	AIMMA	0	13.05.2015	IPO	86.80	Banca Intermobiliare
Biodue	AIMMA	0	20.05.2015	IPO	50.96	Baldi & Partners
Massimo Zanetti Beverage	MTA	0	03.06.2015	IPO	400.38	BNP Paribas
Inwit	MTA	0	22.06.2015	IPO	2 391.30	Banca Imi
Bomi Italia	AIMMA	0	26.06.2015	IPO	45.42	Banca Popolare di Vicenza
Masi Agricola	AIMMA	0	30.06.2015	IPO	145.28	Equita Sim

NEWLY ADMITTED COMPANIES (THROUGH IPOs, SPOs AND INSTITUTIONAL PLACINGS)

Security:	COVER 50			Total	of which Public	of which Institutionals
Offer period:	Offered shares:	max	1 040 000	min	max 1 040 000
	13.05.2015	Greenshoe:	max	156 000	-
Offer price:	18.60	Requested shares:	
Bookbuilding range:	Allotted shares:		1 040 000	1 040 000
Minimum lot:	- of which greenshoe:		-	-
Placed stake:	23.6%	Capital raised (ML euro):		19.34	19.34
		- from newly issued shares:		7.44		
Blt alphabetical code:					
Bloomberg code:	Market and segment:		AIM Italia - Mercato Alternativo del Capitale		
Reuters code:	Sector:			
Security:	BIODUE			Total	of which Public	of which Institutionals
Offer period:	Offered shares:	max	1 250 000	min	max 1 250 000
	20.05.2015	Greenshoe:	max	-
Offer price:	3.55	Requested shares:	
Bookbuilding range:	Allotted shares:		1 126 500	1 126 500
Minimum lot:	- of which greenshoe:		-	-
Placed stake:	10.1%	Capital raised (ML euro):		4.00	4.00
		- from newly issued shares:		4.00		
Blt alphabetical code:					
Bloomberg code:	Market and segment:		AIM Italia - Mercato Alternativo del Capitale		
Reuters code:	Sector:			
Security:	MASSIMO ZANETTI BEVERAGE GROUP			Total	of which Public	of which Institutionals
Offer period:	18.05.2015	Offered shares:	max	11 000 000	min 1 200 000	max 9 800 000
	27.05.2015	Greenshoe:	max	1 200 000	-	-
Offer price:	11.60	Requested shares:		18 796 731	3 897 200	14 899 531
Bookbuilding range:	11.6000-15.7500	Allotted shares:		11 000 000	2 838 400	8 161 600
Minimum lot:	400	- of which greenshoe:		-	-	-
Placed stake:	32.1%	Capital raised (ML euro):		127.60	32.93	94.67
		- from newly issued shares:		73.08		
Blt alphabetical code:					
Bloomberg code:	Market and segment:		MTA - STAR		
Reuters code:	Sector:			
Security:	INWIT			Total	of which Public	of which Institutionals
Offer period:	08.06.2015	Offered shares:	max	218 000 000	min 22 000 000	max 196 000 000
	17.06.2015	Greenshoe:	max	21 800 000	-	-
Offer price:	3.65	Requested shares:		1 910 233 884	36 717 500	1 873 516 384
Bookbuilding range:	3.2500-3.9000	Allotted shares:		239 800 000	22 000 000	217 800 000
Minimum lot:	1 250	- of which greenshoe:		21 800 000	-	21 800 000
Placed stake:	40.0%	Capital raised (ML euro):		875.27	80.30	794.97
		- from newly issued shares:		-		
Blt alphabetical code:					
Bloomberg code:	Market and segment:		MTA -		
Reuters code:	Sector:			
Security:	BOMI ITALIA			Total	of which Public	of which Institutionals
Offer period:	Offered shares:	max	3 999 500	min 1 090 500	max 2 909 000
	26.06.2015	Greenshoe:	max	545 000	-	-
Offer price:	2.75	Requested shares:	
Bookbuilding range:	Allotted shares:		3 999 500	1 090 500	2 909 000
Minimum lot:	- of which greenshoe:		-	-	-
Placed stake:	26.6%	Capital raised (ML euro):		12.10	3.00	9.10
		- from newly issued shares:		12.10		
Blt alphabetical code:					
Bloomberg code:	Market and segment:		AIM Italia - Mercato Alternativo del Capitale		
Reuters code:	Sector:			
Security:	MASI AGRICOLA			Total	of which Public	of which Institutionals
Offer period:	Offered shares:	max	7 089 000	min	max 7 089 000
	30.06.2015	Greenshoe:	max	965 000	-
Offer price:	4.60	Requested shares:	
Bookbuilding range:	Allotted shares:		6 436 000	6 436 000
Minimum lot:	- of which greenshoe:		-	-	-
Placed stake:	20.0%	Capital raised (ML euro):		29.61	29.61
		- from newly issued shares:		20.00		
Blt alphabetical code:					
Bloomberg code:	Market and segment:		AIM Italia - Mercato Alternativo del Capitale		
Reuters code:	Sector:			

Note: The column "Total" includes, in addition to public and institutional tranches, also prospective offers reserved to other investors (family & friends etc.). Allotted shares figure doesn't include overallotted shares until the greenshoe option is possibly exercised.

RIGHT ISSUES

N°	MKT SEG.	SECURITIES	OPTION RIGHTS TRADING PERIOD		OFFER PRICE	OFFERED SHARES	ISSUE RATE	UNEXERCISED PREEMPTIVE RIGHTS (%)	ALLOTTED SHARES	CAPITAL RAISED (eur m)
			FROM	TO						
1	MTA -	MOLMED ORD	09.03.2015	30.03.2015	0.27	187 311 408	4:5 ord , 4:5 rights	0.8%	187 311 408	49.8
2	MTA -	PIERREL ORD	23.03.2015	10.04.2015	0.70	4 916 279	1:10 ord , 1:10 rights	18.9%	4 916 279	3.4
3	AIM-MAC	DIGITAL MAGICS ORD	11.05.2015	29.05.2015	4.95	1 008 183	3 :11 ord	3.6%	1 008 183	5.0
4	MTA -	BANCA MONTE PASCHI SIENA ORD	25.05.2015	12.06.2015	1.17	2 558 256 930	10:1 ord , 10:1 rights	0.4%	2 558 256 930	2 993.2
5	MTA -	AEDES ORD	08.06.2015	25.06.2015	0.46	86 956 536	8:1 ord , 8:1 rights	1.6%	86 956 536	40.0
6	MTA -	BANCA CARIGE ORD	08.06.2015	25.06.2015	1.17	726 216 456	7 ord:1 ord/rsp, 7:1 rights	0.2%	726 216 456	849.7

The right issues by I GRANDI VIAGGI and CALEFFI are currently underway

SCRIP RIGHT ISSUES

N°	MKT SEG.	SECURITIES	EFFECTIVE DATE	NOMINAL VALUE		ISSUED SHARES	ISSUE RATE	VALUE (eur m)
				BEFORE	AFTER			
4	AIM-MAC	PRIMI SUI MOTORI	25.05.2015	-	-	1 520 786	1:1	1.5
5	AIM-MAC	FRENDY ENERGY	25.05.2015	-	-	7 937 104	1:5	2.0
6	MIV	MID INDUSTRY CAPITAL*	01.06.2015	-	-	262 698	1:15	-
7	MTA	INTEK GROUP RSP*	29.06.2015	-	-	3 479 875	1:111ord/rsp	-

(*) Free attribution of treasury shares

TOTAL MONEY RAISED (EUR M)

	NUMBER	SECURITIES		MONEY RAISED	SHARE-HOLDERS	INVESTORS			
		NEWLY ISSUED	SOLD			PUBLIC	EMPLOYEES	INSTIT. INVESTORS	OTHER
a) YEAR 2015 - CAPITAL INCREASES	6	3 941.1	-	3 941.1	3 941.1	-	-	-	-
MTA	5	3 936.1	-	3 936.1	3 936.1	-	-	-	-
- of which Star	-	-	-	-	-	-	-	-	-
MIV	-	-	-	-	-	-	-	-	-
AIM Italia - Mercato Alternativo del Capitale	1	5.0	-	5.0	5.0	-	-	-	-
b) YEAR 2015 - OPVS TOTAL (Excluded Closed-end funds)	13	553.8	1 043.9	1 597.8	-	157.4	-	1 440.4	-
MTA	4	483.78	1 018.73	1 502.51	-	154.40	-	1 348.11	-
- of which Star	2	127.08	54.52	181.60	-	32.93	-	148.67	-
MIV	-	-	-	-	-	-	-	-	-
AIM Italia - Mercato Alternativo del Capitale	9	70.07	25.18	95.25	-	3.00	-	92.25	-
NEW LISTINGS	13	680.93	1 098.43	1 779.4	-	190.33	-	1 589.03	-
MTA	4	483.78	1 018.73	1 502.51	-	154.40	-	1 348.11	-
- of which Star	2	127.08	54.52	181.60	-	32.93	-	148.67	-
MIV	-	-	-	-	-	-	-	-	-
AIM Italia - Mercato Alternativo del Capitale	9	70.07	25.18	95.25	-	3.00	-	92.25	-
YEAR 2015 - MONEY RAISED (a+b)	19	4 494.9	1 043.9	5 538.8	3 941.1	157.4	-	1 440.4	-

TAKEOVER BIDS

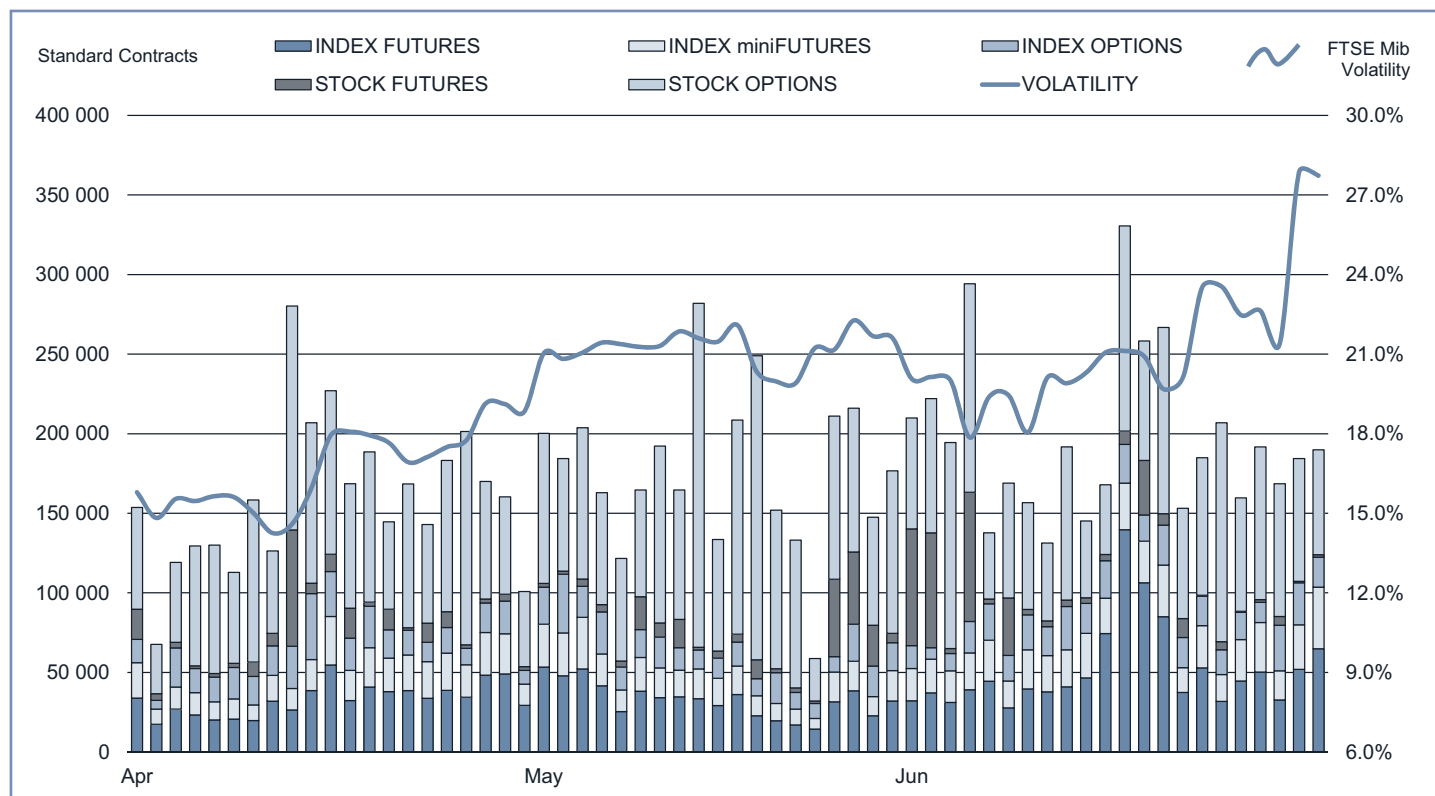
N°	BIDDER	OFFER TYPE	TARGET SHARES	OFFER PERIOD		PRICE (eur)	SHARES		STAKE OWNED AFTER OFFER	TURNOVER (eur m)
				FROM	TO		REQUESTED	BOUGHT		
	HAWORTH ITALY HOLDING S.R.L.	MANDATORY	POLTRONA FRAU	28.04.2014	23.05.2014	2.960	58 094 459	45 316 731	90.89%	134.14
	SVILUPPO IDRICO SRL	VOLUNTARY	ACQUE POTABILI	14.04.2014	30.05.2014	1.200	13 785 355	9 431 746	87.91%	11.32
	CORPORACION AMERICA ITALIA S.R.L.	MANDATORY	AEROPORTO DI FIRENZE	29.04.2014	03.06.2014	13.380	6 016 989	1 407 712	48.98%	18.84
	CORPORACION AMERICA ITALIA S.R.L.	VOLUNTARY	SAT	29.04.2014	03.06.2014	14.220	7 159 198	2 597 164	53.73%	36.93
	VODAFONE GLOBAL ENTERPRISE LTD	VOLUNTARY	COBRA	07.07.2014	25.07.2014	1.490	97 061 271	94 471 802	97.33%	140.76
	B.F. HOLDING SPA	MANDATORY	BONIFICHE FERRARESI	10.07.2014	01.08.2014	30.500	2 228 900	1 061 117	79.24%	32.36
	WHIRLPOOL ITALIA HOLDINGS	MANDATORY	INDESIT COMPANY	03.11.2014	21.11.2014	11.000	34 244 635	31 301 180	87.78%	344.31

The takeovers bid over ordinary shares of Vianini Lavori is currently underway.

Notes: AAI Before unexercised preemptive right auction
AEG Before greenshoe
AIMMA AIM - Mercato Alternativo del Capitale

COMP Compendium
MTAI MTA International
ST Star Segment

IDEM - DERIVATIVES TRADING



	DAYS	MONTH	TURNOVER (1)						OPEN INTEREST (4)		
			TOTAL			DAILY AVERAGE			NUMBER OF CONTRACTS		
			STANDARD CONTRACTS	TRADES NUMBER	TURNOVER eur m	OTHER (2)	% TOT SHARES (3)	STANDARD CONTRACTS	TRADES NUMBER	TURNOVER eur m	NUMBER OF CONTRACTS
INDEX FUTURES (5)	125	YER 2015	4 764 688	3 259 078	525 018.9	..	120.7%	38 118	26 073	4 200.2	54 370
	20	MAY 2015	654 730	485 527	75 429.9	..	107.4%	32 737	24 276	3 771.5	64 833
	22	JUN 2015	1 148 803	685 952	131 129.4	..	174.7%	52 218	31 180	5 960.4	54 370
INDEX MINIFUTURES (6)	125	YER 2015	2 386 674	1 747 668	52 533.8	..	12.1%	19 093	13 981	420.3	3 468
	20	MAY 2015	351 399	265 192	8 094.1	..	11.5%	17 570	13 260	404.7	5 710
	22	JUN 2015	536 990	393 173	12 333.9	..	16.4%	24 409	17 872	560.6	3 468
INDEX OPTIONS	125	YER 2015	2 161 129	316 471	118 925.1	2 137.1	27.3%	17 289	2 532	951.4	380 776
	20	MAY 2015	340 072	48 059	19 482.5	257.0	27.7%	17 004	2 403	974.1	427 022
	22	JUN 2015	423 498	64 377	24 040.7	370.6	32.0%	19 250	2 926	1 092.8	380 776
STOCK FUTURES (7)	125	YER 2015	1 503 962	4 363	5 402.0	..	1.4%	12 032	35	43.2	455 951
	20	MAY 2015	222 325	853	681.7	..	1.1%	11 116	43	34.1	534 233
	22	JUN 2015	365 266	792	1 674.4	..	2.5%	16 603	36	76.1	455 951
SINGLE STOCK DIVIDEND FUTURES	125	YER 2015	13 987	199	6.0	112	2	0.05	45 314
	20	MAY 2015	506	13	0.5	25	1	0.03	45 388
	22	JUN 2015	1 423	34	1.4	65	2	0.06	45 314
STOCK OPTIONS	125	YER 2015	11 185 218	310 509	35 519.2	1 610.8	8.6%	89 482	2 484	284.2	4 246 120
	20	MAY 2015	1 895 196	46 296	5 795.0	252.6	8.6%	94 760	2 315	289.7	5 024 345
	22	JUN 2015	1 840 303	50 732	5 755.7	228.0	8.1%	83 650	2 306	261.6	4 246 120
EQUITY DERIVATIVES TOTAL	125	YER 2015	22 015 658	5 638 288	737 404.9	3 747.9	169.5%	176 125	45 106	5 899.2	5 185 999
	20	MAY 2015	3 464 228	845 940	109 483.8	509.6	155.9%	173 211	42 297	5 474.2	6 101 531
	22	JUN 2015	4 316 283	1 195 060	174 935.4	598.6	233.0%	196 195	54 321	7 951.6	5 185 999
ELECTRICITY FUTURES	125	YER 2015	1 419	166	77.8	1 586 608	..	11	1	0.6	1 210
	20	MAY 2015	225	23	14.7	297 990	..	11	1	0.7	1 029
	22	JUN 2015	80	11	4.2	84 120	..	4	1	0.2	1 210
WHEAT FUTURE	125	YER 2015	373	84	6.0	18 650	..	3	1	0.05	197
	20	MAY 2015	33	5	0.5	1 650	..	2	0.3	0.02	182
	22	JUN 2015	20	12	0.3	1 000	..	1	0.5	0.01	197
IDEM TOTAL	125	YER 2015	22 017 450	5 638 538	737 488.7	176 140	45 108	5 899.9	5 187 406
	20	MAY 2015	3 464 486	845 968	109 498.9	173 224	42 298	5 474.9	6 102 742
	22	JUN 2015	4 316 383	1 195 083	174 939.9	196 199	54 322	7 951.8	5 187 406

(1) The notional turnover is computed as the product of contracts number, price and index multiplier for index futures; contracts number, price and size multiplier for stock futures; contracts number, strike prices and index multiplier for index options; contracts number, strike prices and sizes for stock options.

(2) Premium in euro million for options and equity derivatives total; traded MWh for electricity future, tons for wheat future.

(3) As percentage on shares turnover (total shares for Index derivatives and Idem total; shares with underlying listed on Borsa Italiana for stock futures and stock options).

(4) Open positions at the end of period. Net figures for futures, gross figures for options.

(5) Includes data for FTSE MIB Dividend Futures.

(6) Includes data for FTSE 100 miniFutures.

(7) Includes data for pan-european stock futures.

Additional Information:

This publication uses only electronic trading data (daily and after hours sessions); trades that are reported to Borsa Italiana under its rules but executed away from its electronic order books are not included.

Shares of foreign companies which are exclusively listed on Borsa Italiana and on no other European Exchange, are considered Domestic Companies, included in the Domestic Capitalization and in the Domestic Trading figures.

There were 22 trading days in June 2015 and 21 trading days in June 2014 on Borsa Italiana.

There were 125 trading days in the period January - June 2015 and 125 trading days in the period January - June 2014.

This document contains text, data, graphics, photographs, illustrations, artwork, names, logos, trade marks, service marks and information ("Information") connected with Borsa Italiana S.p.A. ("Borsa Italiana").

All reasonable efforts have been made to ensure that the Information in this document was correct at the time of publication. However, Borsa Italiana Spa accepts no liability for decisions taken, or systems-related or other work carried out by any party based on this document. The publication of this document does not represent solicitation, by Borsa Italiana, of public saving and is not to be considered as a recommendation by Borsa Italiana as to the suitability of the investment, if any, herein described.

© June 2015 Borsa Italiana S.p.A.. All rights reserved.

Register on line if you want receive Monthly Update at your preferred address as soon as the new release is published.
<http://www.borsaitalia.it/bitApp/servlet/RegistrationController?target=frmBase&lang=en>

3rd July 2015 - 17:00

Markets Analysis
Piazza degli Affari, 6 - 20123 Milano
T +39 02 724261 | Fax +39 02 8646.4323
e-mail: markets_analysis@borsaitaliana.it
www.borsaitaliana.it



London

Stock Exchange Group