



NZX Limited - Monthly Shareholder Metrics

August 2014

These Shareholder Metrics represent the key features of NZX's operations in each of its the core businesses. The Metrics focus on what drives the revenue performance of NZX, so as to give an accurate, consistent and transparent comparison across time periods for each business line.

Capital Markets

NZX Listed Issuers	Aug 2014	Change YoY
Total Equity Securities	173	4.8%
Total Listed Debt Securities	86	-3.4%
Total Other Securities	6	0.0%
Total Listed Securities	265	1.9%

Capital Raising	Aug 2014	YTD
Total Capital Raised By All Issuers	\$75 m	\$1,362 m
Total Equity Raised - Primary	\$39 m	\$668 m
Total Equity Raised - Dual & Secondary	\$36 m	\$655 m
Total Debt Raised	\$0 m	\$39 m
Number of Capital Raising Events	12	120
Capital Raised < \$0.5m	6	41
Capital Raised > \$0.5m < \$10m	4	59
Capital Raised > \$10m < \$100m	2	16
Capital Raised > \$100m	0	4
New Capital Listed	\$0.55 b	\$4.96 b

Market Capitalisation	Aug 2014	Change YoY	% of GDP
All Equity	\$90.9 b	16.7%	40.2%
All Debt	\$13.7 b	1.0%	6.0%

NZX Indices Performance	Aug 2014	Change YoY
NZX 50 Index	5,223	15.0%
NZX 50 Portfolio Index	3,168	15.3%
ANZ A-Grade Bond Index	4,305	5.6%
ANZ All Swap Index	170	5.0%

Link Market Services	Aug 2014	Change YoY
Total Number of Issuers	165	7.1%

Cash Market Trading	Aug 2014	Change YoY
Total Trades	107,104	8.8%
Daily Average Trades	5,100	14.0%
Total Trades < \$50k	100,010	10.0%
Total Value Traded	\$2.7 b	-22.7%
Daily Average Value Traded	\$126 m	-19.0%

Total Equity Transactions	Aug 2014	Change YoY
Total Trades	104,400	9.1%
Value Traded	\$2.6 b	-23.4%

Total Debt Transactions	Aug 2014	Change YoY
Total Trades	2,704	-2.7%
Value Traded	\$90 m	9.1%

Cumulative Numbers - YTD	Aug 2014	Change YoY
Number of Trades	863,569	19.8%
Total Value Traded	\$23.2 b	-13.6%

Clearing House / Depository	Aug 2014	Change YoY
Gross Value of Cleared Trades over Month	\$2.7 b	-22.3%
Collateral Held At Month End	\$27.2 m	11.5%
Depository transactions	1,860	-8.2%
Assets under custody in depository	\$227 m	16.4%
Value of stock lent over month	\$178 m	25.2%

Wholesale Data	Aug 2014	Change YoY
Primary Data Distributors	27	8.0%
Real Time Data Terminals	7,584	11.3%
Other Data Distributors (Secondary)	60	39.5%

Direct Data Products	Aug 2014	Change YoY
Proprietary Security Subscription Products	503	-4.9%
- Products >= \$3,000 p.a.	163	-10.9%
- Products < \$3,000 p.a.	340	-1.7%

Funds Management

Smartshares	Aug 2014	Change YoY
Funds Under Management	399 m	17.0%
Units on Issue	187 m	11.9%

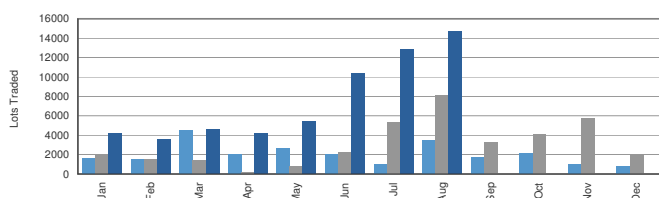
Agri Information

Direct Data Products	Aug 2014	Change YoY
Dairy Information Subscriptions	9,375	-0.3%
Grain Information Subscriptions	1,984	7.1%
General Agri Subscriptions	11,758	16.5%
Total Paid Advertising Page Equivalents	173	-2.8%

Soft Commodities

Derivatives

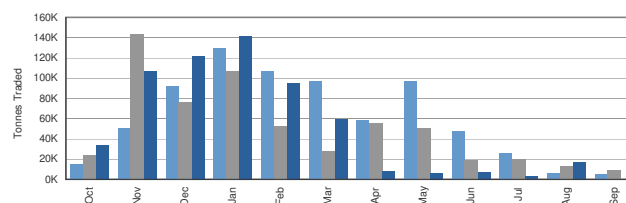
Lots Traded 2012 / 2013 / 2014



	Aug 2014	Change YoY
Lots Traded	14,723	80.7%
Open Interest	25,007	70.8%

Grain Trading

Tonnes Traded Monthly (11/12 v 12/13 v 13/14 season)



	Season to date	Change YoY
Tonnes Traded	600,530	2.2%

Market Operations

Energy Contracts

Aug 2014

Operating / Technology Contracts	13
- Contracts > = \$500k p.a.	4
- Contracts < \$500k p.a.	9

Notes

- All figures are measured at the end of the last trading day of the month. Change refers to the change since the same period last year unless otherwise stated i.e. Change YoY is change versus the same period last year.
- New Capital Listed refers to the initial market capitalisation of Initial Public Offerings and new debt issues.
- All Equity Market Capitalisation includes all securities quoted on the NZX Main Board and NZX Alternative Market.
- Market Capitalisation for the NZX Debt market is the total nominal (face) value of all quoted securities excluding New Zealand Government Stock.
- The Grain Trading season in Australia runs from October to September.
- NZX Limited wishes to remind readers that the above operational statistics are based on the Group's internal records, which are unaudited. Differences may arise between this data and that disclosed in subsequent audited financial statements.

To enquire about NZX products or services, please contact: NZX Data on +64-4-471 4390
or email: info@nzx.com

To enquire about information listed on this sheet, please email info@nzx.com